

2019 SENECA



2019 SENECA



Our favorite spot on Earth!
Summer 2005



2
YEAR
LIMITED
WARRANTY



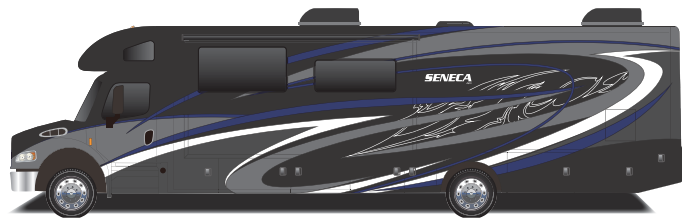
SENECA

FEATURED FLOORPLAN 37TS:

- SOFT-TOUCH VINYL CEILING
- RAISED-PANEL CABINET DOORS
- DUAL-PANE, TINTED, SAFETY-GLASS WINDOWS
- SOLID SURFACE COUNTERTOPS W/ PULL OUT EXTENSION
- RESIDENTIAL REFRIGERATOR W/ STAINLESS KITCHEN APPLIANCE PACKAGE



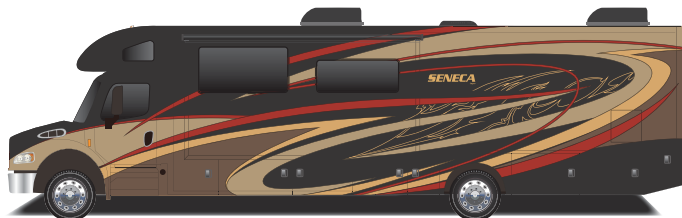
EXTERIOR SELECTIONS



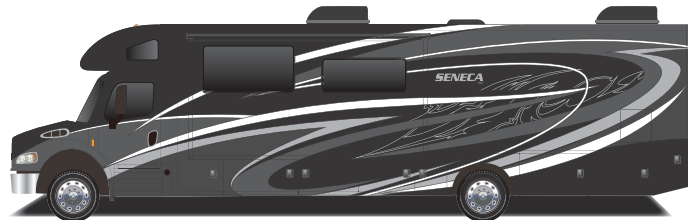
Premium Full Body Paint - Chambers Bay



Premium Full Body Paint - Erin Hills

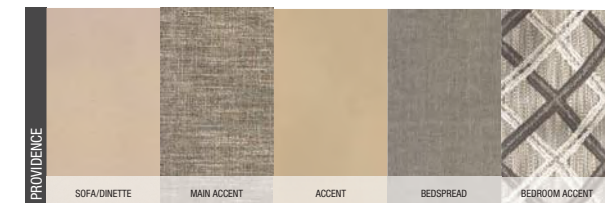
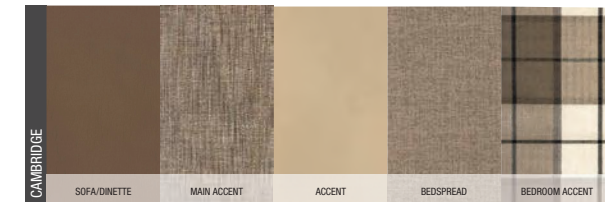


Premium Full Body Paint - Sepia



Premium Full Body Paint - Shadows Creek

INTERIOR SELECTIONS

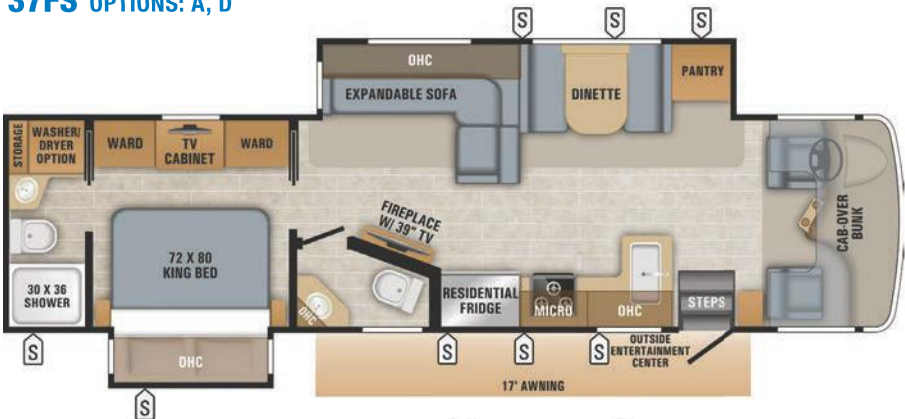




37FS OPTIONS: A, D



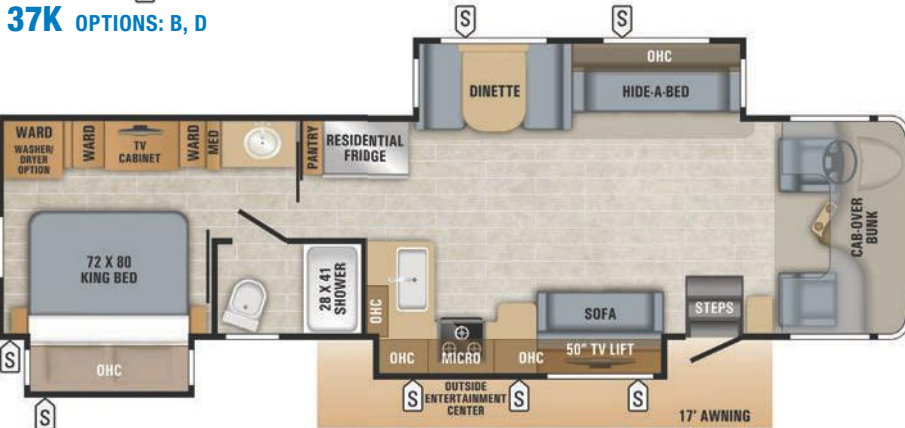
37HJ OPTIONS: A, C, D



37K OPTIONS: B, D



37RB OPTIONS: A, C, D



37TS OPTIONS: A, C, D

OPTIONS



SPECS									
MODELS	DIMENSIONS					TANKS (GALS.)			
	EXTERIOR LENGTH	EXTERIOR WIDTH	EXTERIOR HEIGHT (WITH A/C)	INTERIOR HEIGHT	WHEEL BASE	FRESH WATER CAPACITY (GAL.)	GREY WASTE WATER CAPACITY (GAL.)	BLACK WASTE WATER CAPACITY (GAL.)	
37FS	38' 9"	101	13' 1"	84"	279	72	40	51	
37HJ	38' 9"	101	13' 1"	84"	279	72	40	33	
37K	38' 9"	101	13' 1"	84"	279	72	51	40	
37RB	38' 9"	101	13' 1"	84"	279	72	40	33	
37TS	38' 9"	101	13' 1"	84"	279	72	40	50	

Gross Vehicle Weight Rating (GVWR): The maximum permissible weight of the motorhome, including the Unloaded Vehicle Weight (UUV) plus passengers, personal items, all cargo, fluids, options and dealer-installed accessories. The GVWR is equal to or greater than the sum of the UUV and the Cargo Carrying Capacity.

Gross Combined Weight Rating (GCWR): The maximum allowable combined weight of the motorhome used as a tow vehicle and the attached towed vehicle.

It is important for your safety and enjoyment that you are aware of the weights and tow ratings of the RV you select. Consult a competent advisor for questions or advice. Whether you are new to RVing or a veteran, get a feel for the performance of your RV before heading out on the roadways. When you tow a vehicle with your RV, you must drive differently than when you drive a single vehicle. Practice hooking up, driving, backing up and braking in a safe environment or seek out professional instruction. Jayco affixes a weight label to each RV which lists weight information for that vehicle. Refer to that label to verify the vehicle will meet your requirements.



A FOUNDATION BUILT TO DELIVER FOR THE LONG HAUL

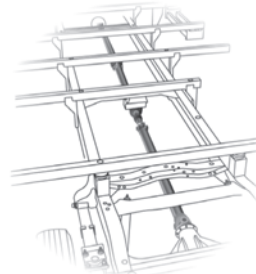
1. **Freightliner® S2RV chassis**
2. **Cummins® ISB 6.7L 360 HP diesel engine** features a 38,000-pound GCWR and a 29,000-pound GVWR; a 12,000-pound-rated hitch; 800 lb. torque; and a gas-strut assisted hood for easy engine access
3. **Allison® 3000 MH automatic transmission** delivers power, control and traction
4. **100-gallon, single-fill, between-the-rails fuel tank**
5. **Michelin® 275/80R 22.5-inch tires**



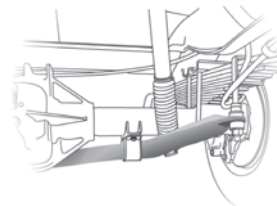
To see a full list of standards and options, use your camera app to scan code.



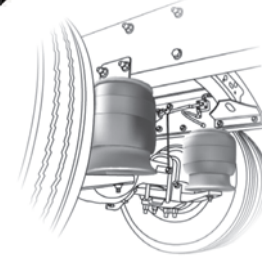
JRide® Premium is a powerful blend of precise handling and renowned stability. Hands down, it's the best ride. **Experience JRide for yourself— visit your local dealer and take a test drive.**



COMPUTER-BALANCED DRIVESHAFT
Ensures smooth and efficient power transfer to the wheels.



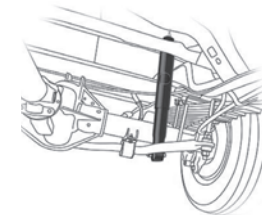
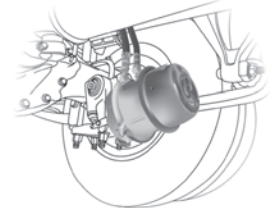
HEAVY-DUTY REAR STABILIZER BAR
Connecting opposite wheels together, a stabilizer bar adds rigidity to the frame, reducing sideways tilting when cornering.



REAR AIR SUSPENSION
This air suspension system greatly improves sway control under heavy loads.

FULL AIR BRAKES

Only available on Freightliner® chassis units, the full air brakes offer peace of mind, even on the steepest inclines.



SACHS SHOCK ABSORBERS
Large-diameter tube design pairs gas and hydraulics to resist heat and pressure while independently adjusting to changing road conditions.

scan QR code for more information



Meet your Jayco Dealer



Follow Jayco
#Jayco50



Jayco, Inc. | P.O. Box 460 | Middlebury, IN 46540 © **RVIA** See dealer for further information and prices. All information in this brochure and on www.jayco.com is the latest available at the time of publication approval. Jayco reserves the right to make changes and to discontinue models without notice or obligation. Photography may show optional equipment or props used for decoration purposes only. RVs built for sale in Canada may differ to conform to Canadian codes. JAYCO and the JAYCO BIRD IN FLIGHT are registered trademarks of Jayco, Inc. Printed in USA 11.4K 10/18 ©2018 Jayco, Inc. 274893

Travel with Confidence



At Jayco, we build our RVs to handle every adventure, then back them with our industry-leading 2-year limited warranty. We, with support from our select partners, have you covered for **2 camping seasons** or **twenty-four thousand (24,000) miles** (mileage limitation applies to motorized products only), whichever occurs first, from the original date of purchase. You won't find a better warranty in the business, because the only strings we attach are those that deliver the ultimate in reliability. That's the Jayco difference. So go explore. For a copy of our 2-year limited warranty with complete terms and conditions, please contact your local Jayco dealer.



A year's access to Coach-Net™—the country's largest RV emergency road service.

